

MAGE 1 Antibody
Rabbit mAb
Catalog # AP92394**Specification**

MAGE 1 Antibody - Product Information

Application	WB, FC, ICC
Primary Accession	P43355
Reactivity	Rat
Clonality	Monoclonal
Other Names	
CT1.1; MAGE1; MAGE1A; MAGEA1;	
Isotype	Rabbit IgG
Host	Rabbit
Calculated MW	34342 Da

MAGE 1 Antibody - Additional Information

Dilution	WB~~1:1000 FC~~1:10~50 ICC~~N/A
Purification	Affinity-chromatography
Immunogen	A synthesized peptide derived from human MAGE 1
Description	May be involved in transcriptional regulation through interaction with SNW1 and recruiting histone deactelyase HDAC1. May inhibit notch intracellular domain (NICD) transactivation. May play a role in embryonal development and tumor transformation or aspects of tumor progression.
Storage Condition and Buffer	Rabbit IgG in phosphate buffered saline , pH 7.4, 150mM NaCl, 0.02% sodium azide and 50% glycerol. Store at +4°C short term. Store at -20°C long term. Avoid freeze / thaw cycle.

MAGE 1 Antibody - Protein Information**Name** MAGEA1**Synonyms** MAGE1, MAGE1A**Function**

May be involved in transcriptional regulation through interaction with SNW1 and recruiting histone deactelyase HDAC1. May inhibit notch intracellular domain (NICD) transactivation. May play a role in embryonal development and tumor transformation or aspects of tumor progression. Antigen

recognized on a melanoma by autologous cytolytic T-lymphocytes.

Cellular Location

Cytoplasm. Nucleus.

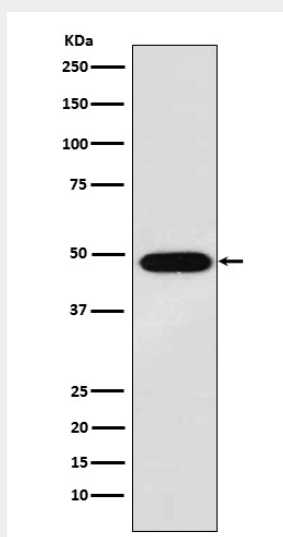
Tissue Location

Expressed in many tumors of several types, such as melanoma, head and neck squamous cell carcinoma, lung carcinoma and breast carcinoma, but not in normal tissues except for testes. Never expressed in kidney tumors, leukemias and lymphomas

MAGE 1 Antibody - Protocols

Provided below are standard protocols that you may find useful for product applications.

- [Western Blot](#)
- [Blocking Peptides](#)
- [Dot Blot](#)
- [Immunohistochemistry](#)
- [Immunofluorescence](#)
- [Immunoprecipitation](#)
- [Flow Cytometry](#)
- [Cell Culture](#)

MAGE 1 Antibody - Images

Western blot analysis of MAGE 1 expression in A375 cell lysate.